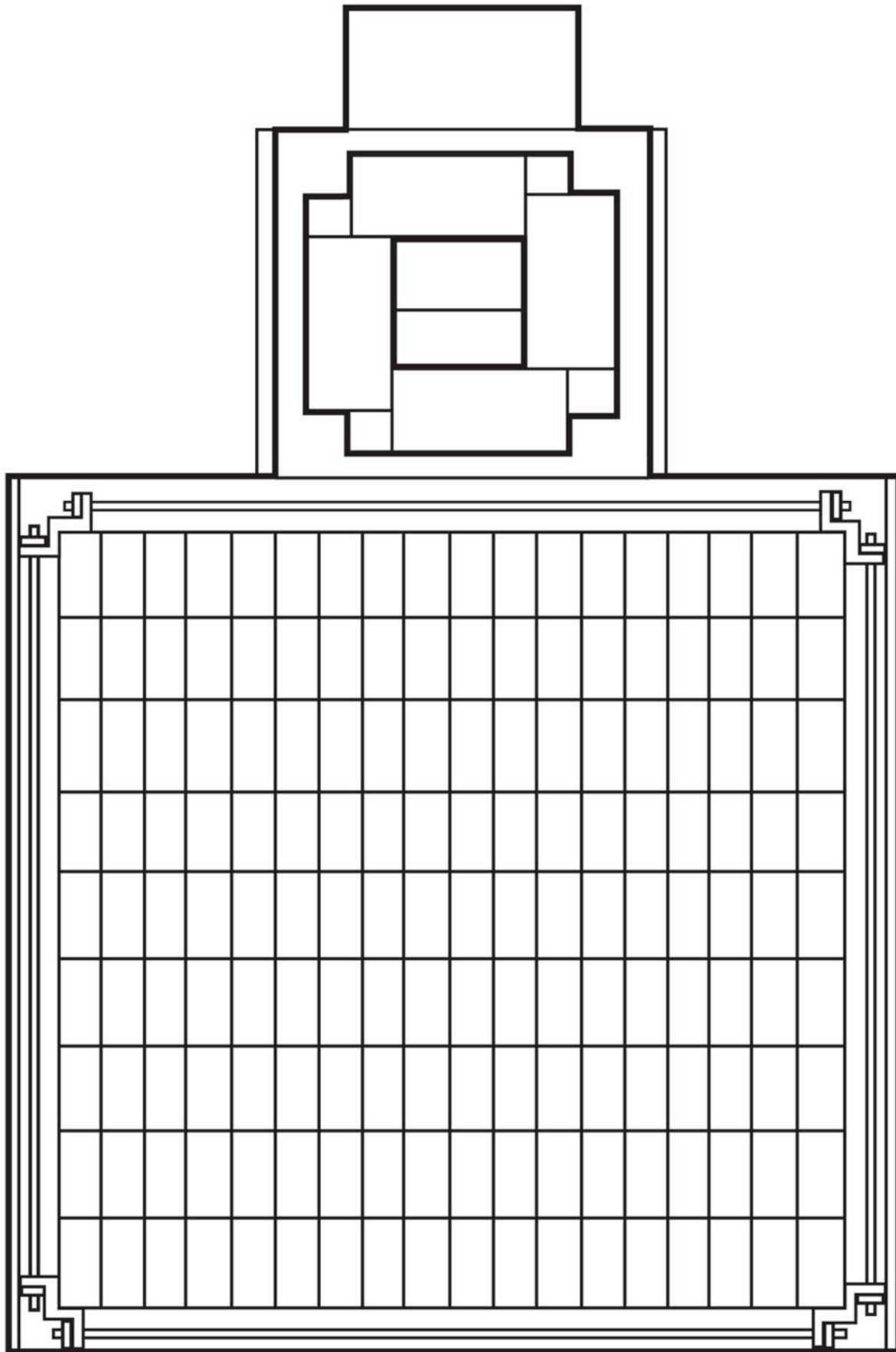
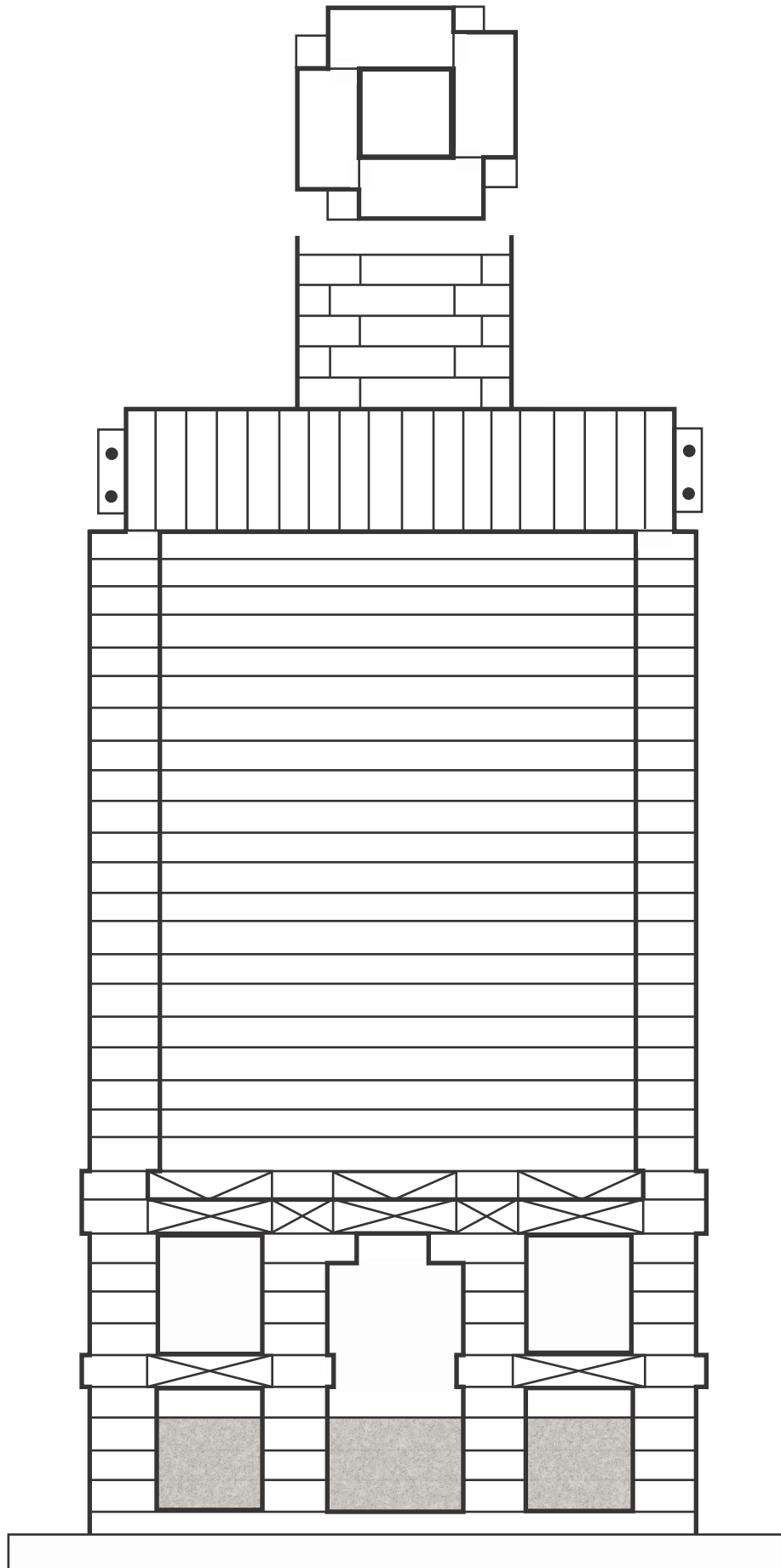


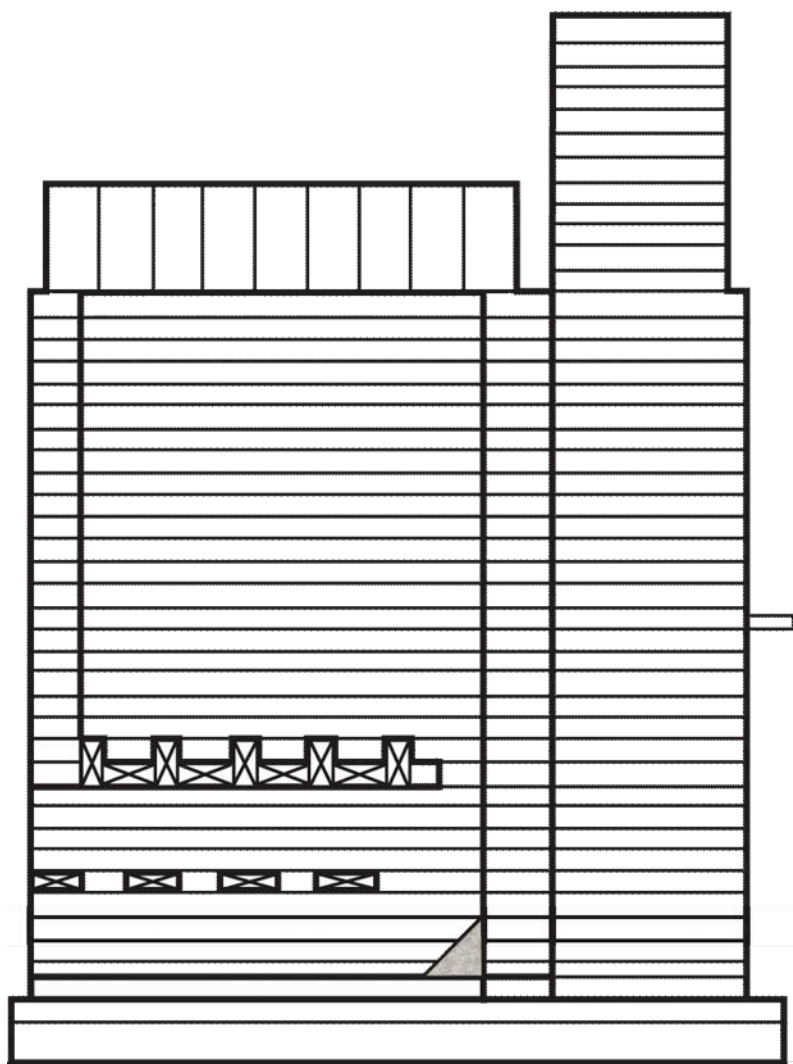
Drawings by Manny Hernandez,
Professor Emeritus, Northern Illinois University



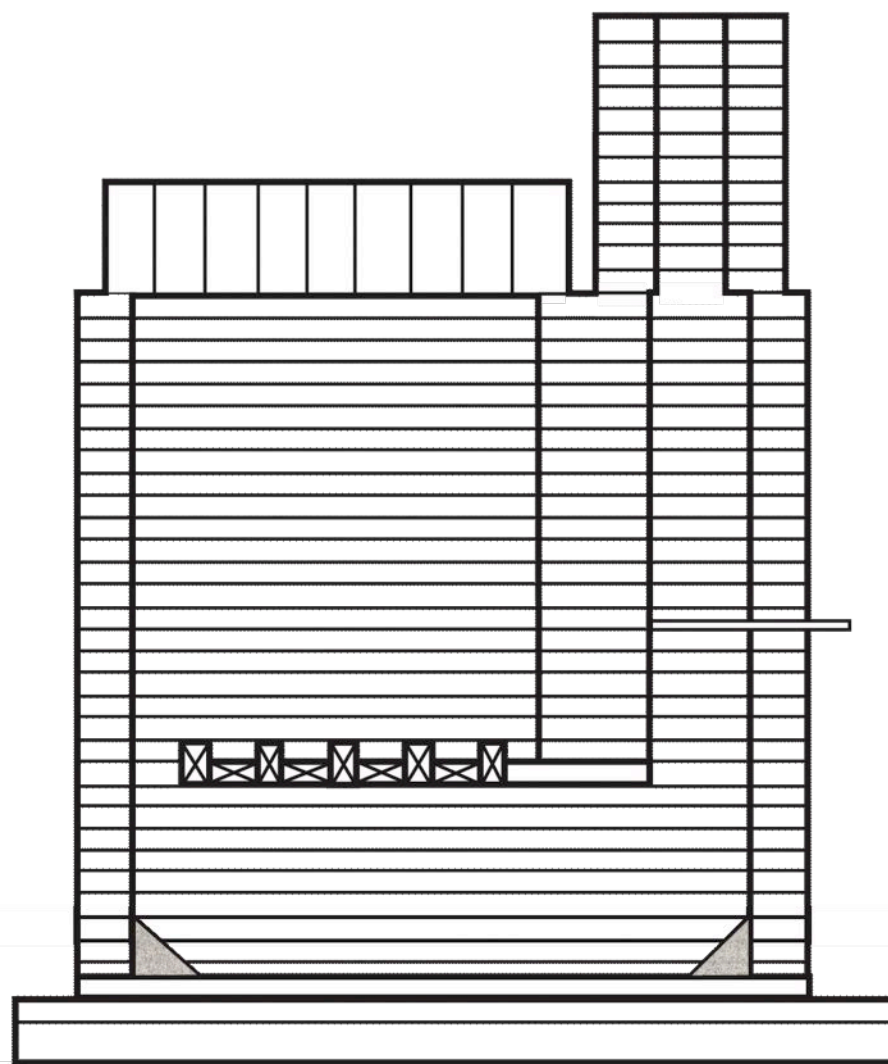
**Drawing 3H - Plan Section
Roof / Chimney**



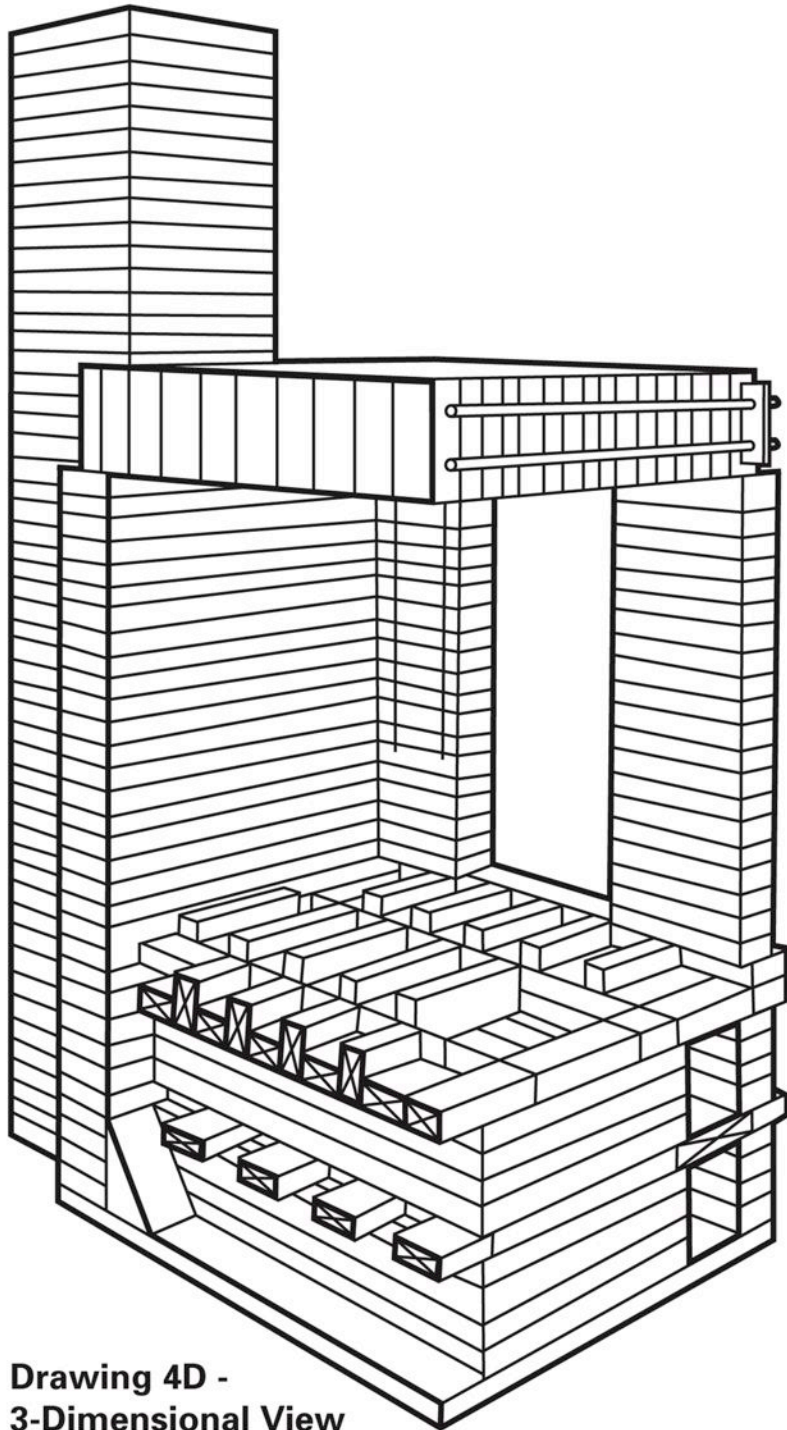
Drawing 4A - Front Elevation Section of All Plan Sections



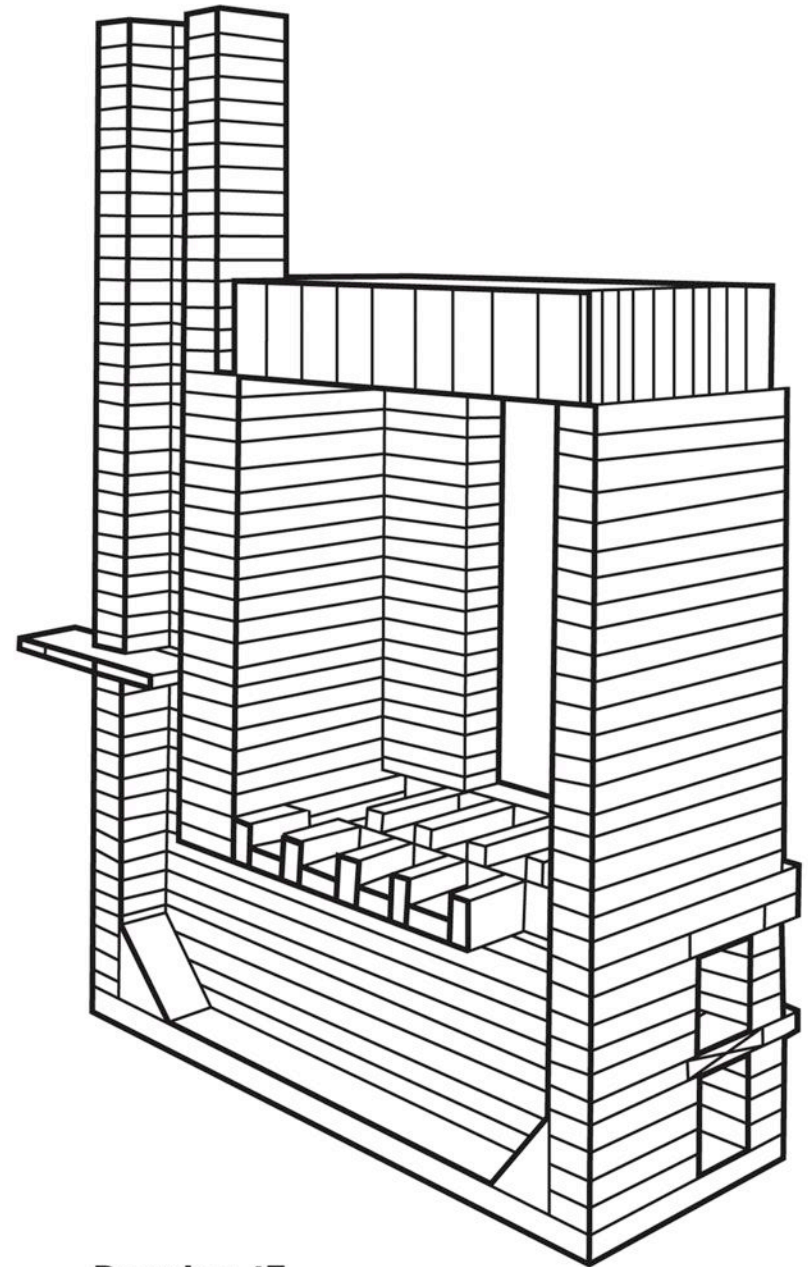
**Drawing 4B - Side Elevation Section
Firebox / Ash-pit**



**Drawing 4C - Side Elevation Section
Flue / Chimney**



**Drawing 4D -
3-Dimensional View
Side Elevation Section
(Section through Firebox / Ash-pit)**



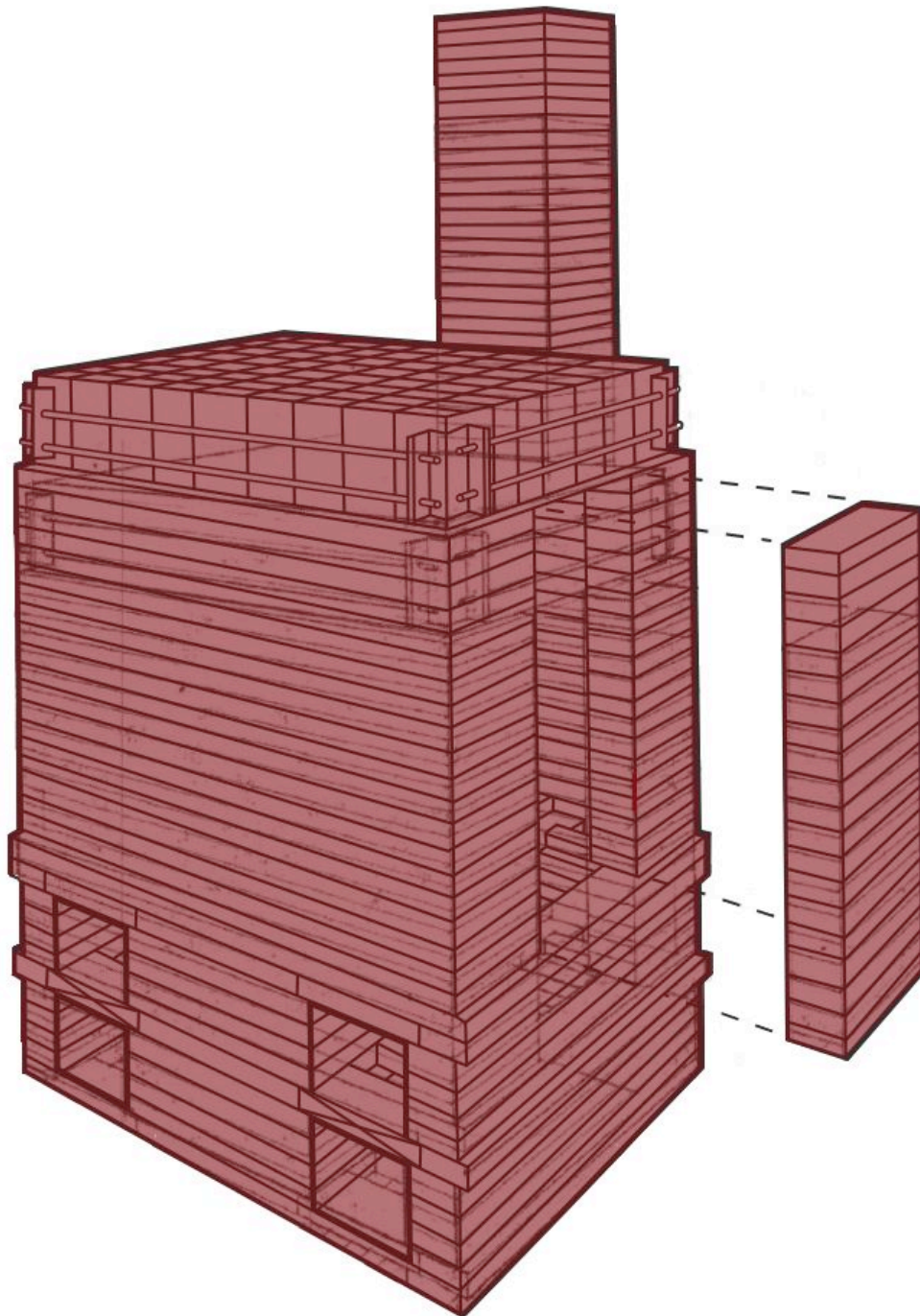
**Drawing 4E -
3-Dimensional View
Side Elevation Section
(Section through Flue / Chimney)**







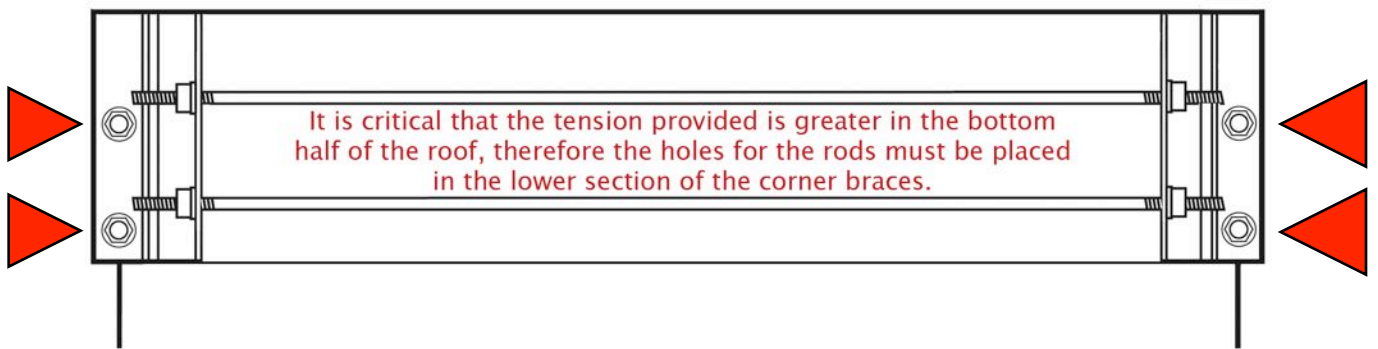
**DRAWING 5A: 3-DIMENSIONAL DRAWING OF
OUTSIDE OF MANI KILN VIEWING FIREBOX AND DOOR**



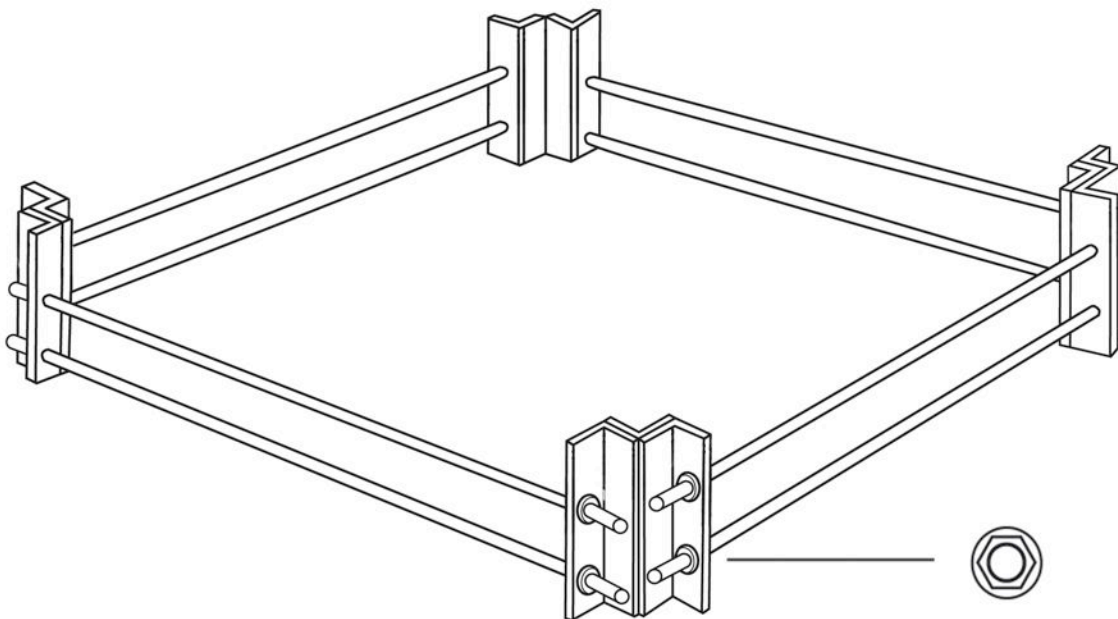
**Drawing 5A - 3-Dimensional Outside View
(Back of Kiln Viewing Fireboxes and Door)**



Drawing 6 - Corner Brackets and Tension Rods Top View



Drawing 6 - Corner Brackets and Tension Rods Front View



Drawing 6 - Corner Brackets and Tension Rod Assembly

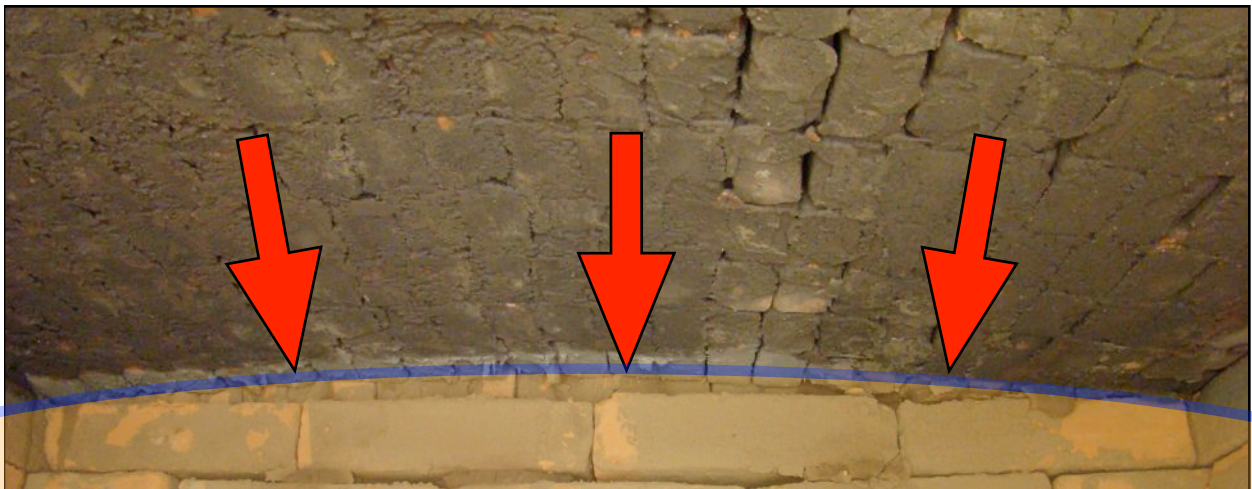




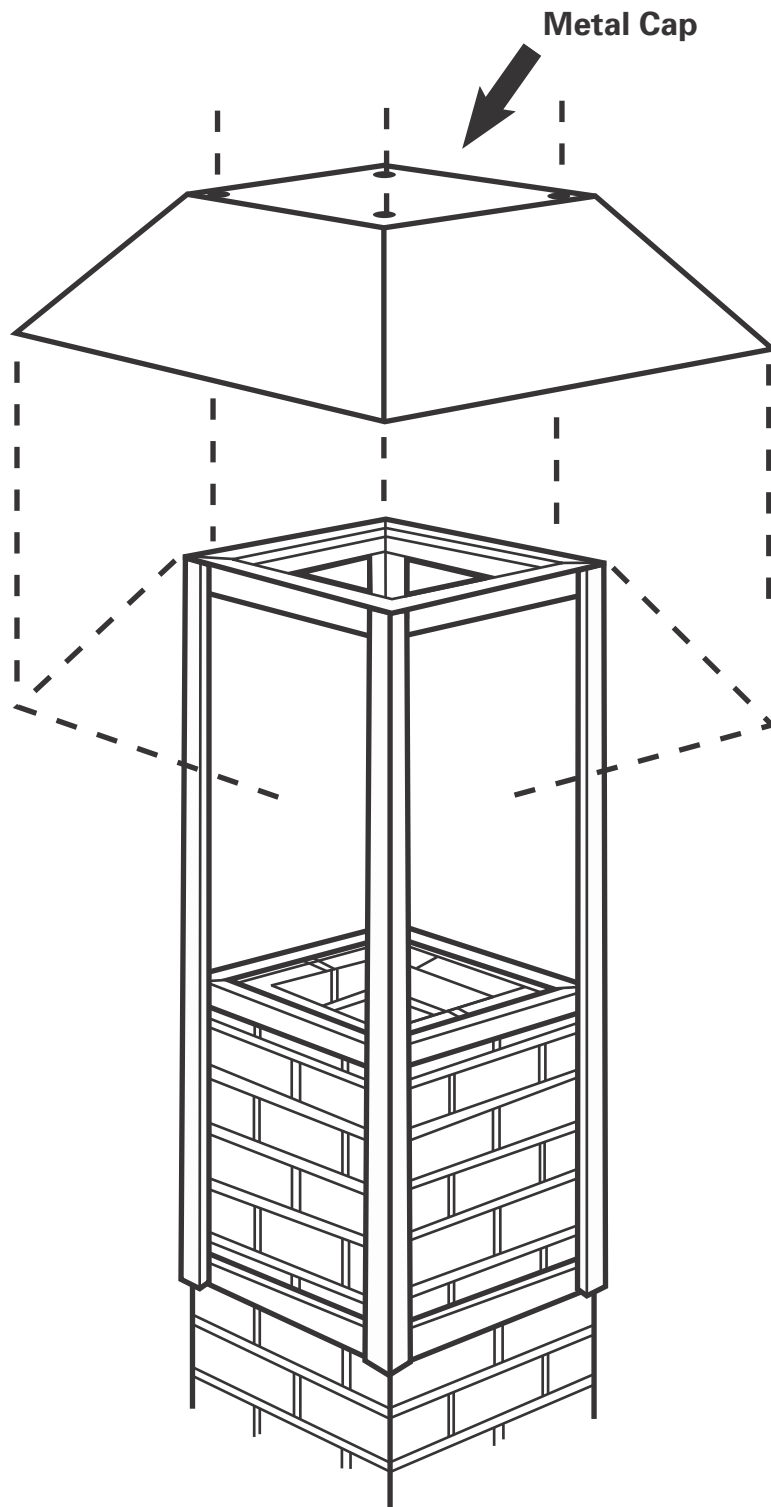




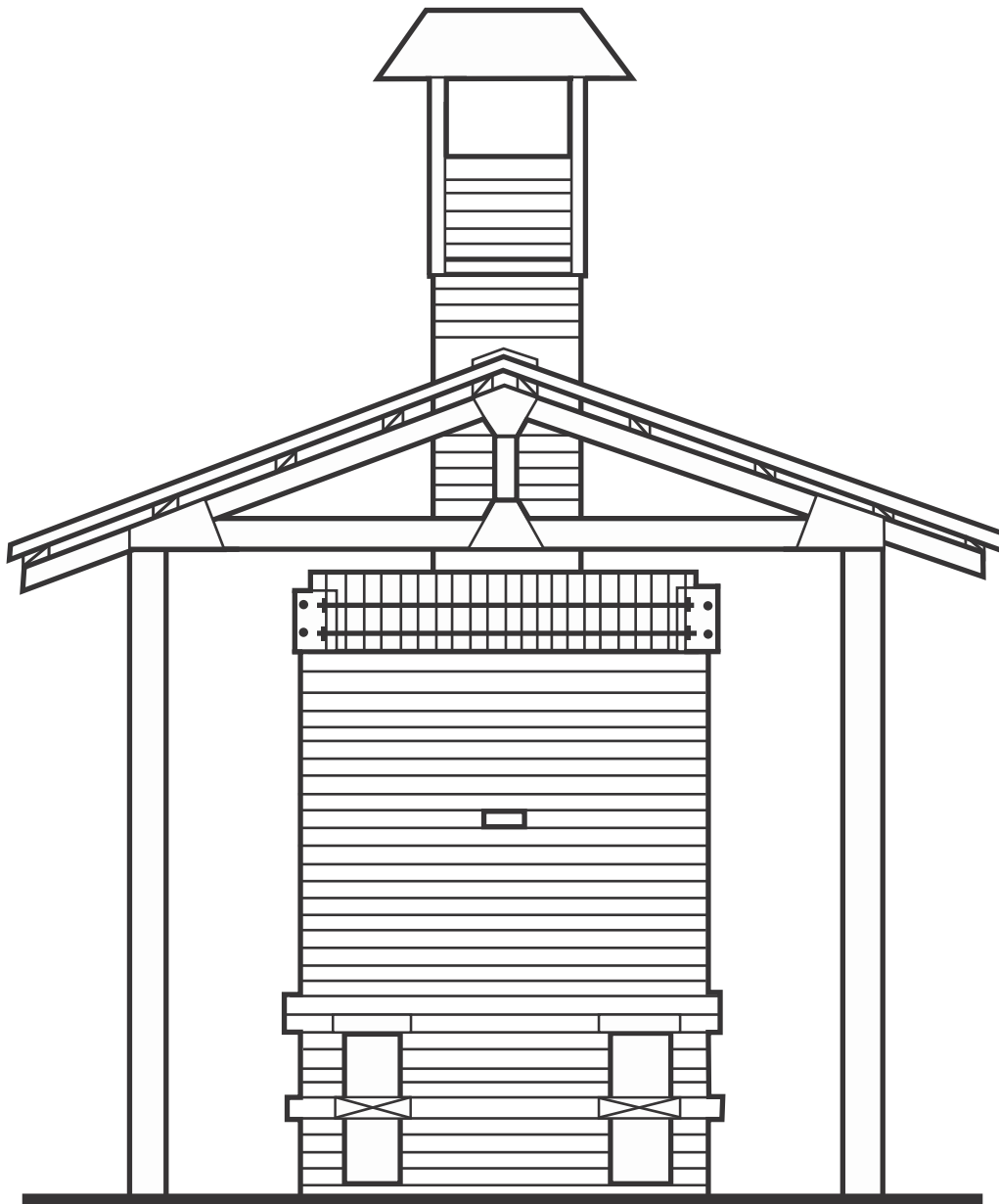
After creating a dome in the roof by jacking up the car jack under the center support, tighten the bolts until the roof begins to dome off the plywood.



The domed roof supports itself after the forms are removed.

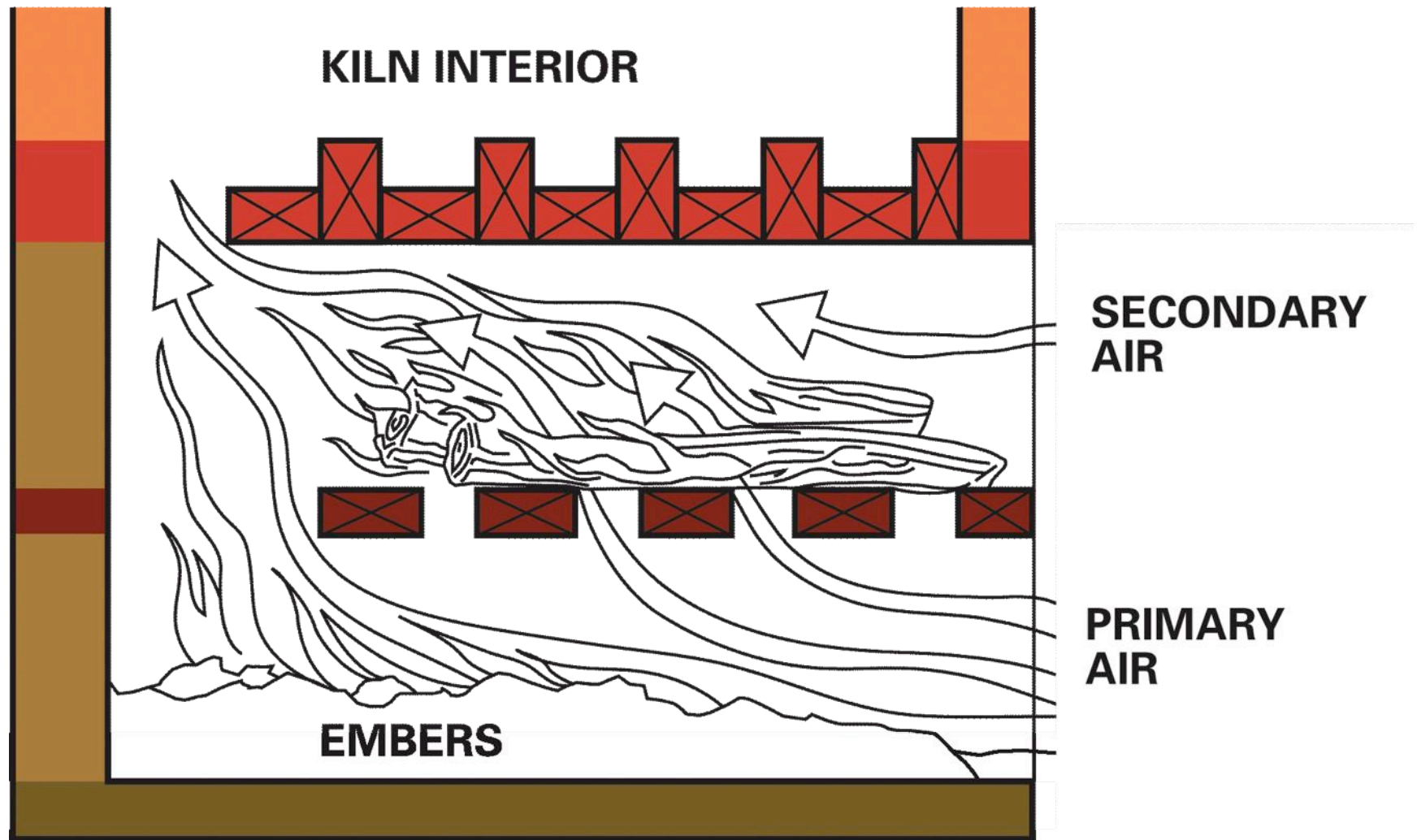


Drawing 7 - Chimney Cap

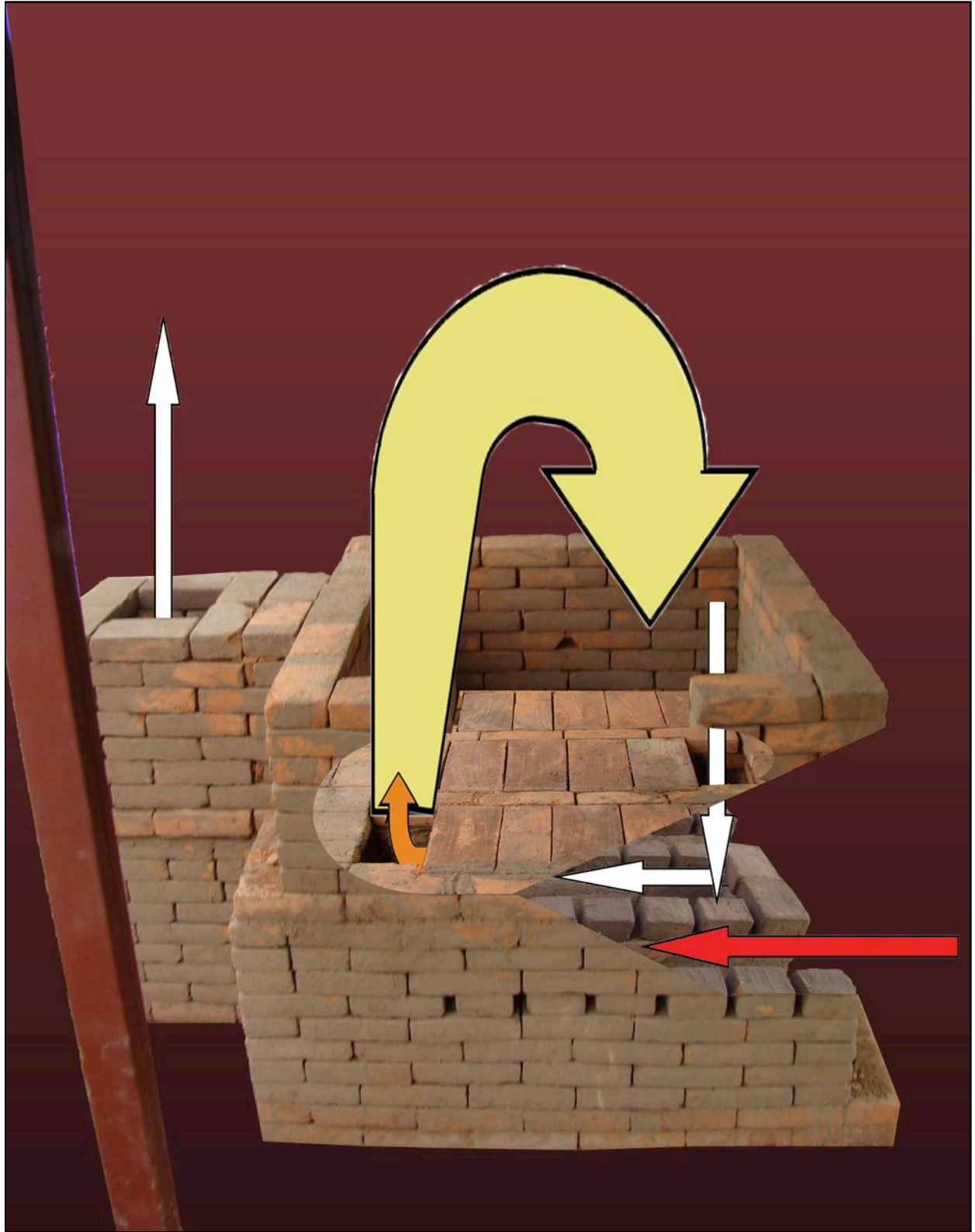


Drawing 8A - Kiln Shelter, Front Elevation





Drawing 2 - Cross Section of Firebox and Ash-pit during the firing stage



Airflow through Kiln

